

Range of Sterile Disinfectants & Sporicides

Product Brochure



+ AMD Representing Redditch Medical's InSpec® range of Sterile Disinfectants and Sporocides

Aseptic Medical Devices are the authorised UK distributor for Redditch Medical's InSpec® range of GMP Cleanroom disinfectants and sporicides for use in the NHS, Aseptic Pharmacy and Compounding applications.



We stock and supply the Sterile InSpec® range of biocidal agents shown in the following pages and can provide advice and guidance on their application and use in GMP environments.



+ InSpec® Biocides Modes of Action

Redditch Medical has a comprehensive range of disinfectants and sporicides - it is important to understand the 'mode of action' of each chemistry.

+ ALCOHOLS

InSpec® IPA - Isopropyl Alcohol & Denatured Alcohol (TSDA 7).

InSpec® DE - 70% v/v Denatured Ethanol (TSDA 7)

Role: Disinfectant

Mode of action: denaturation of proteins

Alcohols are most effective when combined with water which facilitates diffusion through the cell membrane; 100% alcohol typically denatures only external membrane proteins. A mixture of 70% ethanol or isopropanol v/v diluted in water is more effective in denaturing protein and is effective against a wide spectrum of bacteria and fungi.

InSpec® IPA and **InSpec® DE** - Isopropyl alcohol and Denatured alcohol.

Typical Uses

- Material transfer
- Glove disinfection
- Residue removal
- Small surface disinfection

+ BROAD SPECTRUM BIOCIDES

InSpec® AN - Diamine

Role: Disinfectant & cleaner

Mode of action: increases the permeability of the bacterial cell membrane, leading to osmotic imbalance / loss of amino acids leading to cell inactivation.

To enhance penetration and provide a cleaning ability surfactants are added to **InSpec® AN**. Diamines are characterized by relatively low toxicity to mammals at ready to use concentrations. Consequently they are low hazard not normally attracting any hazard warning.

InSpec® QT & QT+ - Quaternary ammonium compound

Role: Disinfectant & cleaner

Mode of action: inactivation of enzymes, denaturation of cellular proteins & disruption of the cell membrane.

Quaternary ammonium compounds are cationic detergents, as well as disinfectants which enhances contact with micro-organisms. **QT+** has additional sequestrants improving the activity of the quaternary ammonium compounds allowing the concentration to be reduced whilst maintaining the same performance so reducing residue levels.

Typical Uses

- Daily disinfection
- Walls, floors and ceilings

+ SPORICIDES

InSpec® OX - Hydrogen peroxide with Peracetic acid

Role: Disinfectant/sporicide

Mode of action: oxidation of cellular components

It is well understood that in combination Hydrogen peroxide and Peracetic acid act synergistically to significantly improve bactericidal and sporicidal activity relative to those of either agent used separately.

InSpec® HA - Hypochlorous Acid

Role: Disinfectant/sporicide

Mode of action: oxidation of cellular components

Hypochlorous acid is a very powerful oxidant; hence is a very potent sporicide at low concentrations. Hypochlorous acid reacts with proteins of many types denaturing and deactivating the protein's functionality. Cellular components such as ribosomes, DNA, RNA, enzymes and structural proteins are all affected and destroyed. The oxidation mechanism of Hypochlorous acid consists of electron transfer.

Typical Uses

- Sporicidal disinfection at weekly/monthly action points
- Walls, floors and ceilings
- Can be incorporated into material transfer at the early stages

➤ InSpec® Biocides Efficacy

Establishing the efficacy of a biocide is critical to selection of the correct programme of use within any cleanroom facility.

Qualification of the efficacy of the InSpec® range is achieved via European Standards - CEN TC 216 phase 1 and phase 2 (suspension tests and surface tests). Testing was performed by accredited 3rd party laboratories.



Summary of InSpec® Biocide Qualification

InSpec® Burstable Pouches

Requirement of EN Standard & Performance of InSpec Product	EN 1276: Bacterial Suspension test	EN 1650: Fungal Suspension test	EN 13697: Bacterial Surface test	EN 13697: Fungal Surface test	EN 13704: Sporocidal Suspension Test	EN 14476: Virucidal Suspension Test
Organisms referenced by standard	<i>P. aeruginosa</i>	<i>C. albicans</i>	<i>P. aeruginosa</i>	<i>C. albicans</i>	<i>B. subtilis</i>	Poliovirus-1,
	<i>S. aureus</i>	<i>A. brasiliensis</i>	<i>S. aureus</i>	<i>A. brasiliensis</i>		Adenovirus-5
	<i>E. hirae</i>		<i>E. hirae</i>			Murine norovirus
	<i>E. coli</i>		<i>E. coli</i>			
Temperature	20°C					
Clean conditions	0.3 g/l bovine albumin					
EN Contact time Required	5 mins	15 mins	5 mins	15 mins	60 mins	5 mins
EN Log Reduction Required	5 Log	4 Log	4 Log	3 Log	3 Log	4 Log
Achieved by InSpec QT	Pass	Pass	Pass	Pass	N/A	N/A
Achieved by InSpec QT+	Pass	Pass	Pass	Pass	N/A	N/A
Achieved by InSpec AN	Pass	Pass	Pass	Pass	N/A	N/A
Achieved by InSpec IPA	Pass	Pass	Pass	Pass	N/A	N/A
Achieved by InSpec DE	Pass	Pass	Pass	Pass	N/A	N/A
Achieved by InSpec OX	Pass	Pass	Pass	Pass	Pass at 2 mins	Poliovirus 4.54 log reduction Adenovirus 4.05 log reduction Murine norovirus, 4.19 log reduction
Achieved by InSpec HA	Pass	Pass	Pass	Pass	Pass at 1 min	Poliovirus > 4 Adenovirus > 4 Murine norovirus > 4

1. Eudralex Volume 4 "The Rules Governing Medicinal Products in the European Union", Annex 1 Draft.
 2. United States Pharmacopoeia (USP) General Chapter 1072 "Disinfectants and Antiseptics" 13.
 This chapter stipulates that a 3 log reduction in the viable microbial count should be demonstrated for bacteria.
 Note: EN test standard requirements are much higher than the USP standards.

+ InSpec® Enhanced Chemistry

Cleaning and disinfection are two distinct and separate processes. Cleaning is the process of removing residues and soil from surfaces to the extent that they are visually clean.

InSpec® products with surfactants present have additional mechanisms:

Wetting

Low surface tension allowing penetration behind soils and into cracks ensuring product contact for efficacy

Hydrolysis

Breaking down insoluble molecules rendering them more soluble

Emulsification

Forming an emulsion of hydrophobic materials such as grease/oil into solution providing improved efficacy in high traffic/risk areas

Solubility

The Polarity of solvent molecules and soil compounds can either be polar or nonpolar. As a generality 'like dissolves like' i.e. polar soil dissolves in polar solvent; nonpolar soil dissolves in nonpolar solvent.

REF 1

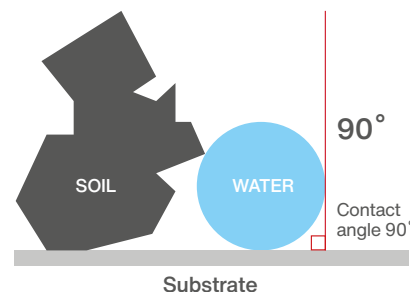
For disinfection to be effective, prior cleaning to remove surface contamination should be performed.

Summary of the Mechanism(s) at work in the InSpec® Range

Efficacy				
InSpec Product	Surfactant Present	Type	Dominant Cleaning Mechanism(s)	Cleaning Ability
InSpec N7	Yes	Non-Ionic	Wetting + Emulsification + Solubility	High
InSpec N10	Yes	Non-Ionic	Wetting + Emulsification + Hydrolysis + Solubility	Very High
InSpec IPA	No	N/A	Solubility	Medium
InSpec DE	No	N/A	Solubility	Medium
InSpec QT	Yes	Cationic Surfactant	Wetting + Emulsification + Solubility	High
InSpec QT+	Yes	Cationic Surfactant	Wetting + Emulsification + Solubility	High
InSpec AN	Yes	Anionic Surfactant	Wetting + Emulsification + Solubility	High
InSpec OX	No	N/A	Solubility	Medium
InSpec HA	No	N/A	Solubility	Medium

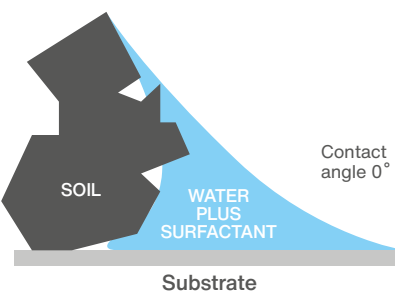
No Surfactant Present

- Surface tension is high
- Reduced amount of contact



Surfactant Present

- Surface tension is reduced
- Improves contact with product



Detergent Product	Dilution Rate	Distance Impregnated Magnetic Wipe Travelled														
		1 4cm	2 8cm	3 12cm	4 16cm	5 20cm	6 24cm	7 28cm	8 32cm	9 36cm	10 40cm	11 44cm	12 48cm	13 52cm	14 56cm	15 60cm
InSpec N10	4%	Pass	Pass	Pass	Pass	Pass	Caution	Fail	Fail	Fail	Fail	ND	ND	ND	ND	Fail
InSpec N7	4%	Pass	Pass	Pass	Caution	Fail	Fail	Fail	Fail	Fail	Fail	ND	ND	ND	ND	Fail

Key

- Pass** Passes 3M Clean-Trace Surface Protein Plus test - indicating a clean surface
- Caution** Caution - 3M Clean-Trace Surface Protein Plus test - indicating more cleaning may be required i.e. borderline
- Fail** Fails 3M Clean-Trace Surface Protein Plus test - indicating a protein contaminated surface
- ND** Test at this distance travelled not performed

Aseptic Medical Devices

Newmarket Drive, Derby DE24 8SW | +44 (0) 1332 755622
sales@asepticmedical.com | www.asepticmedical.com

Aseptic Medical Devices is a trading name of Riverside Medical Packaging Company Limited

+ Trigger Spray Technology

1 Three Nozzle Settings



2 Ergonomic Trigger

3 Anti-tamper locking neck - avoids refilling

4 Ink jet coded: Date of Manufacture Batch No. Expiry Date

5 Polypropylene outer case

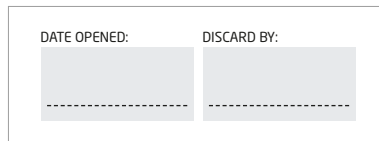
6 Inner collapsible liner see over for explanation



7 End user write-on panels



Sterile



Inner collapsible liner

This liner enables the contents to be sprayed out without drawing air into the contents, maintaining sterility throughout use and is qualified for 3 months.



Full and sterile

Used for up to 3 months

Empty and sterile

Aseptic Medical Devices

Newmarket Drive, Derby DE24 8SW | +44 (0) 1332 755622
sales@asepticmedical.com | www.asepticmedical.com

Aseptic Medical Devices is a trading name of Riverside Medical Packaging Company Limited



+ Burstable Pouch Sterile Session Wipes

A complete range of sterile sporicidal, biocidal and detergent wipes in a session wipe. Pouch compartments maintain wipe and product efficacy for full shelf life.



+ ORDERING INFORMATION

InSpec® Burstable Pouches

Product	Pack Size	Case Size	Redditch Code	AMD Code
InSpec® HA Burstable Pouch	15 wipes/pouch	20 per case	HAPW50BP15S	W10C20H
InSpec® OX Burstable Pouch	15 wipes/pouch	20 per case	OPW40BP15S	W10C20X
InSpec® AN Burstable Pouch	15 wipes/pouch	20 per case	ANWF120BP15S	W10C20A
InSpec® QT Burstable Pouch	15 wipes/pouch	20 per case	QTWF130BP15S	W10C20Q
InSpec® QT+ Burstable Pouch	15 wipes/pouch	20 per case	QTPLWF131BP15S	W10C20T

Please use the AMD Code when ordering.

AMD are the official UK distributor for Redditch Medical's range of products to the NHS, pharmacies and compounders.

+ PRODUCT INFORMATION

Use Instructions

Remove the pouch from the outer dust bag. With the inner bag intact, roll the foil pouch/liquid compartment and apply downward pressure to burst the liquid through the frangible seal. Leave for one minute to saturate the wipes. Remove the foil pouch from the outer bag. Tear open the end of the bag and peel open the foil pouch to gain access to the wipes. Use a recommended wiping technique to clean and disinfect the surface.

Technical Wipe Data

Lint Grade 1. 68gsm Polyester (45%) / Cellulose (55%) material 230mm x 230mm (9" x 9"). Thickness 0.32mm.

Storage

Store in original packaging away from sunlight and extremes of temperature. Full information on the storage and handling is available on the Safety Datasheets (SDS).

Safe Handling

Always wear gloves and goggles or face protection. Always read the label and SDS before use.

Material Compatibility

Application of solutions, when used as directed, will not affect materials normally encountered in the cleanroom. See compatibility information in the Technical File.

Benefits

- HA (Hypochlorous Acid) suitable for the aseptic transfer process
- Fully validated formulations
- <60 seconds activation time
- Session wipe format minimises waste
- Any combination of AN, QT, OX and HA are ideal rotational partners
- Manufactured to GMP in an ISO 6 cleanroom. The product is filled and capped in an ISO class 5 environment
- Sterile wipes until the point of use
- Multiple bags for cleanroom transfer
- Manufactured to GMP
- The solution is filtered through a 0.2 micron filter and aseptically filled into pre-gamma irradiated packaging (25-45kGy) and tested to give a sterility assurance level SAL of 10⁻⁶

Specification

The burstable wipes are available in a choice of five presentations:

OX Sporicidal preparation of Hydrogen Peroxide 6%/Peracetic Acid 0.4% v/v. Rapid action 2 minute kill time. 2 year shelf life.

HA Sporicidal preparation of Hypochlorous Acid. A safe handling, low odour, low residue. Rapid action 1 minute kill time. 1 year shelf life.

QT Biocidal quaternary ammonium compound disinfectant cleaner. A rapid action, non-oxidising biocide. 2 year shelf life.

QT+ Biocidal quaternary ammonium compound disinfectant cleaner. Exceptional Quat disinfectant with proven efficacy against a wide range of Bacteria, Yeast and Fungi. 2 year shelf life.

AN Biocidal diamine disinfectant. A broad spectrum, rapid action, low residue, Quat free. 2 year shelf life.

InSpec® wipes are manufactured to GMP and are filled and sealed in an ISO class 5 environment.

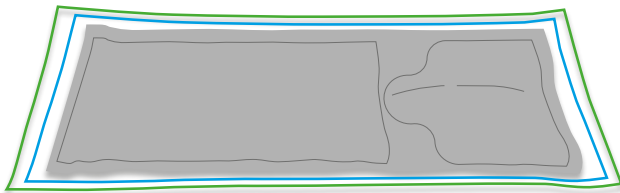
Aseptic Medical Devices

Newmarket Drive, Derby DE24 8SW | +44 (0) 1332 755622
sales@asepticmedical.com | www.asepticmedical.com

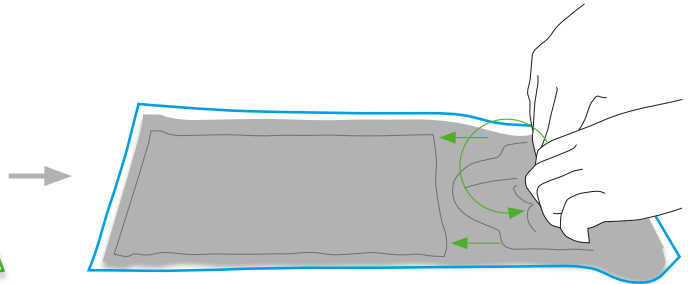
Aseptic Medical Devices is a trading name of Riverside Medical Packaging Company Limited

➤ Sterile Biocidal Session Wipes

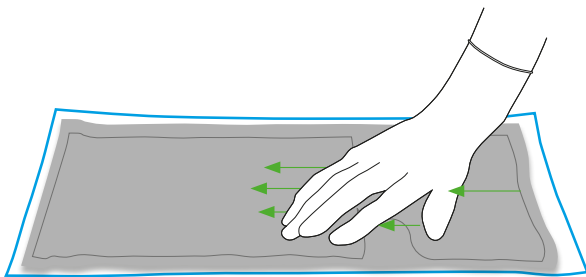
Instructions for Use.



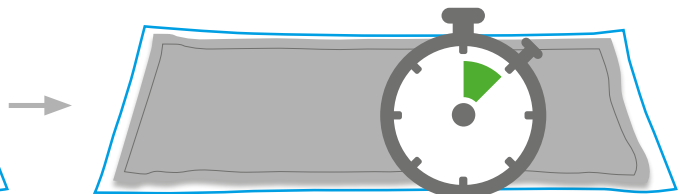
- 1** Ensure the pouch is free from defects and is placed on a hard flat surface. Remove all but one outer bag. NB – sterile products start with two outer bags, non-sterile versions only have a single outer bag.



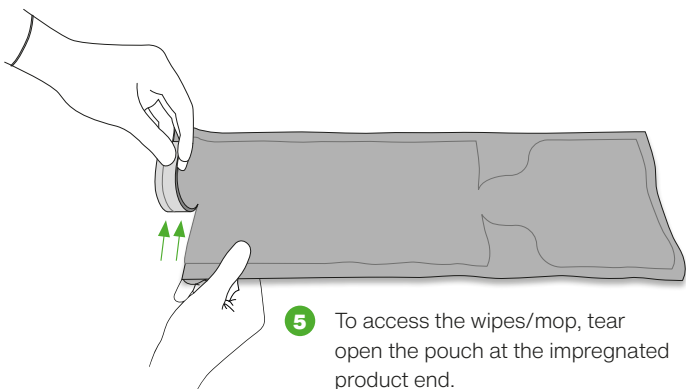
- 2** With a single outer bag remaining, roll the pouch from the liquid end and apply pressure to force the liquid across the frangible barrier to wet the wipes/mop.



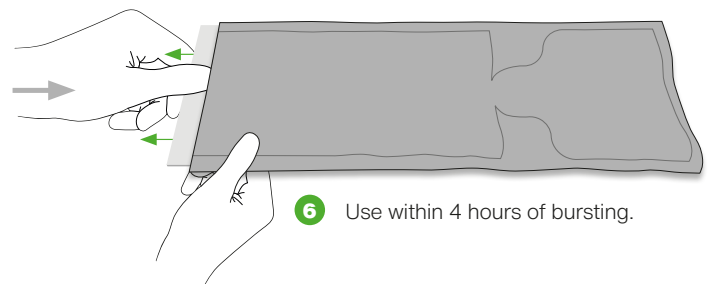
- 3** Ensure liquid is fully transferred to the wipe/mop section.



- 4** Wait for 1 minute, then remove the clear outer bag ensuring there is no damage or leak present.



- 5** To access the wipes/mop, tear open the pouch at the impregnated product end.



- 6** Use within 4 hours of bursting.

+ InSpec® HA

Sterile Sporicidal Preparation of Hypochlorous Acid (HC10 δ OCI δ + H δ ⁺). Low odour, safe handling, low residue and fully effective.

+ INFORMATION

Microbiological Minimum Efficacy Testing Contact

EN 1276 Bacteria	5 minutes	EN 13697 Bacteria	5 minutes
EN 1650 Fungi	15 minutes	EN 13697 Fungi	15 minutes
EN 13704	1 minute (Bacillus Subtilis)		



+ ORDERING INFORMATION

InSpec® HA Products

Product	Pack Size	Case Size	Redditch Code	AMD Code
InSpec® HA 1L Trigger	1L Trigger Spray	6 x 1L	HAPW50-1LS	D06C10H
InSpec® HA 5L Screw Cap	5 Litre Screw Cap	2 x 5L	HAPW50-5LS	D02C00H
InSpec® HA Burstable Pouch	15 wipes/pouch	20 per case	HAPW50BP15S	W10C20H

Please use the AMD Code when ordering.

AMD are the official UK distributor for Redditch Medical's range of products to the NHS, pharmacies and compounders.

+ PRODUCT INFORMATION

Use Instructions

InSpec HA® is designed for spraying, wiping and mopping applications. Hold spray approximately 15cm to 20cm from area to be treated. 5L versions, pour into an appropriate container for mopping.

Technical Data

Appearance: Colourless aqueous solution with a characteristic mild chlorine odour. pH 4.0 to 6.5.

Storage

Store upright in original closed containers away from sunlight and extremes of temperature. Full guidance on the handling and disposal of this product is available in the Safety Data Sheet (SDS).

Safe Handling

Always wear gloves and goggles or face protection. Always read the label and SDS before use.

Material Compatibility

Application of solutions, when used as directed, will not affect materials normally encountered in the cleanroom. See compatibility information in the Technical File.

Benefits

- One of the safest and fully effective sporicides. All formats are non hazardous
- Very low residue, corrosion and odour
- Stabilised solution - 12 months shelf life
- Contents protected using 'bag-in-bottle' presentation with premium range (spray bottle)
- 1L and 5L formats available as Ready to Use
- Multiple bags for cleanroom transfer
- Ideal rotational partner for InSpec® QT, InSpec® QT+ and InSpec® AN
- Manufactured to GMP
- Active Substance compliant with Article 95 of the Biocidal Products Regulation (BPR)

Technical User Information

InSpec® HA is a sterile sporicide available ready to use.

InSpec® HA is manufactured to GMP and is filled and capped in an ISO class 5 environment.

The solution is filtered through a 0.2 micron filter and aseptically filled into pre-gamma irradiated packaging (25-45kGy) and tested to give a sterility assurance level SAL of 10⁻⁶.

For screw cap bottles use the entire contents after opening.

Aseptic Medical Devices

Newmarket Drive, Derby DE24 8SW | +44 (0) 1332 755622
sales@asepticmedical.com | www.asepticmedical.com

Aseptic Medical Devices is a trading name of Riverside Medical Packaging Company Limited

+ InSpec® OX

Sterile Sporicidal Preparation Hydrogen Peroxide 6% v/v and Peracetic Acid 0.4% v/v. Rapid action - two minute kill time. Achieves the EN sporicidal standard - 3 log reduction in 2 minutes.



+ INFORMATION

Microbiological Minimum Efficacy Testing Contact

EN 1276 Bacteria	5 minutes	EN 13697 Bacteria	5 minutes
EN 1650 Fungi	15 minutes	EN 13697 Fungi	15 minutes
EN 13704	2 minutes (Bacillus Subtilis)		

+ ORDERING INFORMATION

InSpec® OX Products

Product	Pack Size	Case Size	Redditch Code	AMD Code
InSpec® OX 1L Trigger	1L Trigger Spray	6 x 1L	OPPW40-1LS	D06C10X
InSpec® OX 5L Screw Cap	5 Litre Screw Cap	2 x 5L	OPPW40-5LS	D02C00X
InSpec® OX Burstable Pouch	15 wipes/pouch	20 per case	OPPW40BP15S	W10C20X

Please use the AMD Code when ordering.

AMD are the official UK distributor for Redditch Medical's range of products to the NHS, pharmacies and compounders.

+ PRODUCT INFORMATION

Use Instructions

InSpec® OX is designed for spraying, wiping and mopping applications. Hold spray approximately 15cm to 20cm from area to be treated. 5L versions, pour into an appropriate container for mopping.

Technical Data

Appearance: Colourless clear liquid with a characteristic strong acetic odour. pH 1.3 - 2.0.

Storage

Store upright in original closed containers away from sunlight and extremes of temperature. Full guidance on the handling and disposal of this product is available in the Safety Data Sheet (SDS).

Safe Handling

Always wear gloves and goggles or face protection. Always read the label and SDS before use.

Material Compatibility

Application of solutions, when used as directed, will not affect materials normally encountered in the cleanroom. See compatibility information in the Technical File.

Benefits

- One of the most effective sporicides available on the market
- All formats classed as an irritant. Low Hazard
- Stabilised solution - 24 months shelf life
- Contents protected using 'bag-in-bottle' presentation with premium range (spray bottle)
- 1L and 5L formats available as Ready to Use
- Multiple bags for cleanroom transfer
- Ideal rotational partner for InSpec® QT+ and InSpec® AN
- Manufactured to GMP
- Active Substance compliant with Article 95 of the Biocidal Products Regulation (BPR)

Technical User Information

InSpec® OX is a sterile sporicide available ready to use.

InSpec® OX is manufactured to GMP and is filled and capped in an ISO class 5 environment.

The solution is filtered through a 0.2 micron filter and aseptically filled into pre-gamma irradiated packaging (25-45kGy) and tested to give a sterility assurance level SAL of 10⁻⁶.

For screw cap bottles use the entire contents after opening.

Aseptic Medical Devices

Newmarket Drive, Derby DE24 8SW | +44 (0) 1332 755622
sales@asepticmedical.com | www.asepticmedical.com

Aseptic Medical Devices is a trading name of Riverside Medical Packaging Company Limited

+ InSpec® AN

Sterile Diamine, Disinfectant Cleaner.
Low residue, QUAT-free disinfectant/cleaner,
broad spectrum disinfectant.

+ INFORMATION

Microbiological Minimum Efficacy Testing Contact

EN 1276 Bacteria	5 minutes	EN 13697 Bacteria	5 minutes
EN 1650 Fungi	15 minutes	EN 13697 Fungi	15 minutes

+ ORDERING INFORMATION

InSpec® AN Products

Product	Pack Size	Case Size	Redditch Code	AMD Code
InSpec® AN 900ml Trigger	900ml Trigger Spray	6 x 900ml	ANWFI20-900MLS	D06C90A
InSpec® AN 5L Screw Cap	5 Litre Screw Cap	2 x 5L	ANWF120-5LS	D02C00A
InSpec® AN Concentrate	100ml Screw Cap	50 x 100ml	ANCNC20-100	D50C01A
InSpec® AN Burstable Pouch	15 wipes/pouch	20 per case	ANWFI20BP15S	W10C20A

Please use the AMD Code when ordering.

AMD are the official UK distributor for Redditch Medical's range of products to the NHS, pharmacies and compounders.



+ PRODUCT INFORMATION

Use Instructions

InSpec® AN is designed for spraying, wiping and mopping applications. For spraying hold approximately 15 to 20cm from area to be treated. For screw cap versions, pour into an appropriate container for mopping and add 100ml of concentrate per 2.4L of water. Apply to surface to ensure complete coverage.

Technical Data

Alcohol, chlorine and QUAT-free disinfectant cleaner. 4% RTU Solution pH 8.8 to 10.5, concentrate pH 10.

Storage

Store upright in original closed containers away from sunlight and extremes of temperature. Full guidance on the handling and disposal of this product is available in the Safety Data Sheet (SDS).

Safe Handling

Always wear gloves and goggles or face protection. Always read the label and SDS before use.

Material Compatibility

Application of solutions, when used as directed, will not affect materials normally encountered in the cleanroom. See compatibility information in the Technical File.

Benefits

- An exceptional non-oxidising biocide
- Bactericidal and Fungicidal
- Cleans and disinfects
- Contents protected using 'bag-in-bottle' presentation with premium range (spray bottle)
- 1L and 5L formats manufactured with WFI quality water
- Multiple bags for cleanroom transfer
- Ideal rotational partner for InSpec® QT, InSpec® HA and InSpec® OX

- Manufactured to GMP
- Active Substance compliant with Article 95 of the Biocidal Products Regulation (BPR)

Technical User Information

InSpec® AN is a sterile disinfectant in pre-diluted and concentrated formats.

InSpec® AN is manufactured to GMP and is filled and capped in an ISO class 5 environment.

The solution is filtered through a 0.2 micron filter and gamma irradiated to a validated process (20-50kGy for 5L products, 25-45kGy for all other formats) to give a sterility assurance level SAL of 10⁻⁶.

Trigger sprays supplied with 900ml solution in a 1L container.

For screw cap bottles use the entire contents after opening.

Aseptic Medical Devices

Newmarket Drive, Derby DE24 8SW | +44 (0) 1332 755622
sales@asepticmedical.com | www.asepticmedical.com

Aseptic Medical Devices is a trading name of Riverside Medical Packaging Company Limited

+ InSpec® QT

Sterile Quaternary Ammonium Compound, Disinfectant Cleaner. Exceptional Quat disinfectant showing anti-microbial properties. Proven efficacy against a wide range of bacteria, yeast and mould.

+ INFORMATION

Microbiological Minimum Efficacy Testing Contact

EN 1276 Bacteria	5 minutes	EN 13697 Bacteria	5 minutes
EN 1650 Fungi	15 minutes	EN 13697 Fungi	15 minutes

+ ORDERING INFORMATION

InSpec® QT Products

Product	Pack Size	Case Size	Redditch Code	AMD Code
InSpec® QT 900ml Trigger	900ml Trigger Spray	6 x 900ml	QTFI30-1LS	D06C90Q
InSpec® QT 5L Screw Cap	5 Litre Screw Cap	2 x 5L	QTFI30-5LS	D02C00Q
InSpec® QT Concentrate	100ml Screw Cap	50 x 100ml	QTCNC30-100	D50C01Q
InSpec® QT Burstable Pouch	15 wipes/pouch	20 per case	QTPLWFI31BP15S	W10C2QT

Please use the AMD Code when ordering.

AMD are the official UK distributor for Redditch Medical's range of products to the NHS, pharmacies and compounders.



+ PRODUCT INFORMATION

Use Instructions

InSpec® QT is designed for spraying, wiping and mopping applications. For spraying hold approximately 15 to 20cm from area to be treated. For screw cap versions, pour into an appropriate container for mopping and add 100ml of concentrate per 2.4L of water. Apply to surface to ensure complete coverage.

Technical Data

Aldehyde-free disinfectant cleaner. RTU pH 11.5 to 12.5, concentrate pH 12.5.

Storage

Store upright in original closed containers away from sunlight and extremes of temperature. Full guidance on the handling and disposal of this product is available in the Safety Data Sheet (SDS).

Safe Handling

Always wear gloves and goggles or face protection. Always read the label and SDS before use.

Material Compatibility

Application of solutions, when used as directed, will not affect materials normally encountered in the cleanroom. See compatibility information in the Technical File.

Benefits

- An exceptional non-oxidising biocide
- Bactericidal and Fungicidal
- Cleans and disinfects in the presence of dirt, blood and proteins.
- Contents protected using 'bag-in-bottle' presentation with premium range (spray bottle)
- 1L and 5L formats manufactured with WFI quality water
- Multiple bags for cleanroom transfer
- Ideal rotational partner for InSpec® AN, InSpec® HA and InSpec® OX
- Manufactured to GMP
- Active Substance compliant with Article 95 of the Biocidal Products Regulation (BPR)

Technical User Information

InSpec® QT is a sterile disinfectant in pre-diluted and concentrated formats.

InSpec® QT is manufactured to GMP and is filled and capped in an ISO class 5 environment.

The solution is filtered through a 0.2 micron filter and gamma irradiated to a validated process (at 20-50kGy for 5L products and 25-45kGy for all other formats) to give a sterility assurance level SAL of 10⁻⁶.

Trigger sprays supplied with 900ml solution in a 1L container.

For screw cap bottles use the entire contents after opening.

Aseptic Medical Devices

Newmarket Drive, Derby DE24 8SW | +44 (0) 1332 755622
sales@asepticmedical.com | www.asepticmedical.com

Aseptic Medical Devices is a trading name of Riverside Medical Packaging Company Limited

+ InSpec® QT+

Sterile Quaternary Ammonium Compound, Disinfectant Cleaner. Exceptional Quat disinfectant with proven efficacy against a wide range of Bacteria, Yeast and Fungi.



+ INFORMATION

Microbiological Minimum Efficacy Testing Contact

EN 1276 Bacteria	5 minutes	EN 13697 Bacteria	5 minutes
EN 1650 Fungi	15 minutes	EN 13697 Fungi	15 minutes

+ ORDERING INFORMATION

InSpec® QT+ Products

Product	Pack Size	Case Size	Redditch Code	AMD Code
InSpec QT+ 900ml Trigger RTU	900ml Trigger Spray	6 x 900ml	QTPLWFI31-900MLS	D06C9QT
InSpec QT+ 5 L RTU	5 Litre Screw Cap	2 x 5L	QTPLWFI31-5LS	D02C0QT
InSpec QT+ Concentrate 102ml	102ml Screw Cap	50 x 102ml	QTPLCNC-102	D50C1QT
InSpec® QT+ Burstable Pouch	15 wipes/pouch	20 per case	QTPLWFI31BP15S	W10C2QT

Please use the AMD Code when ordering.

AMD are the official UK distributor for Redditch Medical's range of products to the NHS, pharmacies and compounders.

+ PRODUCT INFORMATION

Use Instructions

InSpec QT+ is designed for spraying, wiping and mopping applications. For spraying hold approximately 15 to 20cm from area to be treated. For screw cap versions, pour into an appropriate container for mopping and add 102ml of concentrate per 4.9L of water. Apply to surface to ensure complete coverage.

Technical Data

Formulated Quaternary Ammonium Compound based disinfectant/cleaner. Active substance concentration, RTU formats: 0.1 - 0.2% w/w DDAC. Concentrated formats: 5-6% w/w DDAC. RTU pH = 10.5 to 11.5. Concentrate pH = 12.5 to 13.5.

Storage

Store upright in original closed containers, away from sunlight and extremes of temperature. Full guidance on the handling and disposal of this product is available in the Safety Data Sheet (SDS).

Safe Handling

Always wear gloves and goggles or face protection. Always read the label and SDS before use.

Material Compatibility

Application of solutions, when used as directed, will not affect materials normally encountered in the cleanroom. See compatibility information in the Technical File.

Benefits

- An exceptional non-oxidising biocide
- Bactericidal and Fungicidal
- Low residue
- Contents protected using 'bag-in-bottle' technology.
- 1L and 5L formats manufactured with WFI quality water
- Double bagged to enable rapid cleanroom transfer
- Ideal rotational partner for InSpec® AN, InSpec® HA and OX products

- Manufactured in accordance with GMP
- Active Substance compliant with Article 95 of the Biocidal Products Regulation (BPR)

Technical User Information

InSpec QT+ is a sterile disinfectant in pre-diluted and concentrated formats.

InSpec QT+ is manufactured to GMP and is filled and capped in an ISO class 5 environment.

The solution is filtered through a 0.2 micron filter and gamma irradiated via a validated process (at 25-45kGy) providing a sterility assurance level SAL of 10⁻⁶.

Trigger sprays supplied with 900ml solution in a 1L container.

For screw cap bottles use the entire contents after opening.

Aseptic Medical Devices

Newmarket Drive, Derby DE24 8SW | +44 (0) 1332 755622
sales@asepticmedical.com | www.asepticmedical.com

Aseptic Medical Devices is a trading name of Riverside Medical Packaging Company Limited

+ InSpec® DE

Sterile Denatured Ethanol, Sterile Wipes, 70% v/v with WFI Water. Low residue, rapid action, fast drying, alcohol disinfectant.

+ INFORMATION

Microbiological Minimum Efficacy Testing Contact

EN 1276 Bacteria	5 minutes	EN 13697 Bacteria	5 minutes
EN 1650 Fungi	15 minutes	EN 13697 Fungi	15 minutes

+ ORDERING INFORMATION

InSpec® DE Products

Product	Pack Size	Case Size	Redditch Code	AMD Code
InSpec® DE 500ml Premium	500ml Trigger Spray	8 x 500ml	DEWF11-500MLS	D08C51T
InSpec® DE 1L Premium	1L Trigger Spray	6 x 1L	DEWF10-1LS	D06C11T
InSpec® DE 5L Screw Cap	5 Litre Screw Cap	2 x 5L	DEWF10-5LS	D02C00T
InSpec® DE Pouch 15pc	15 Wipes	25 per case	DEWFIPCH15S	W25C15T
InSpec® DE Pouch 50pc	50 Wipes	16 per case	DEWFIPCH50S	W15C51T
InSpec® DE Standard Tub	200 Wipes	12 per case	DEWF12TB200S	W12C21T

Please use the AMD Code when ordering.

AMD are the official UK distributor for Redditch Medical's range of products to the NHS, pharmacies and compounders.



+ PRODUCT INFORMATION

Use Instructions

InSpec® DE is designed for spraying, wiping and mopping applications. Hold spray approximately 15cm to 20cm from area to be treated. 5L versions, pour into an appropriate container for mopping. Apply to surface to ensure complete coverage. For screw cap bottles use the entire contents after opening.

Technical Data

Appearance: Clear liquid free from particles. Specific Gravity (20°C): 0.880 to 0.888. Alcohol proportion: 70% +/- 2% v/v.

Storage

Store upright in original closed containers away from sunlight and extremes of temperature. Full guidance on the handling and disposal of this product is available in the Safety Data Sheet (SDS).

Safe Handling

Always wear gloves and goggles or face protection. Always read the label and SDS before use.

Material Compatibility

Application of solutions, when used as directed, will not affect materials normally encountered in the cleanroom. See compatibility information in the Technical File.

Benefits

- Low residue
- Rapid action
- Bactericidal and Fungicidal
- Contents protected using 'Bag-in-bottle' presentation with Premium range
- Contents protected using filtered trigger presentation with standard range (spray bottle)
- 1L and 5L formats manufactured with WFI quality water
- Multiple bags for cleanroom transfer
- Ideal surface and aseptic transfer disinfectants

- Manufactured to GMP
- Active Substance compliant with Article 95 of the Biocidal Products Regulation (BPR)

Technical User Information

InSpec® DE is a sterile ready to use disinfectant. This is a 70% v/v alcohol solution in WFI quality water.

InSpec® DE is manufactured to GMP and is filled and capped in an ISO class 5 environment.

The solution is filtered through a 0.2 micron filter and gamma irradiated to a validated process (at 20-50kGy for 5L products and 25-45kGy for all other formats) to give a sterility assurance level SAL of 10⁻⁶.

Aseptic Medical Devices

Newmarket Drive, Derby DE24 8SW | +44 (0) 1332 755622
sales@asepticmedical.com | www.asepticmedical.com

Aseptic Medical Devices is a trading name of Riverside Medical Packaging Company Limited

+ InSpec® IPA

Sterile Isopropyl Alcohol, Sterile Wipes, 70% v/v with WFI Quality Water.

Low residue, rapid action, fast drying, alcohol disinfectant.

+ INFORMATION

Microbiological Minimum Efficacy Testing Contact

EN 1276 Bacteria	5 minutes	EN 13697 Bacteria	5 minutes
EN 1650 Fungi	15 minutes	EN 13697 Fungi	15 minutes

+ ORDERING INFORMATION

InSpec® IPA Products

Product	Pack Size	Case Size	Redditch Code	AMD Code
InSpec® IPA 500ml Premium	500ml Trigger Spray	8 x 500ml	IPAWF11-500MLS	D08C50P
InSpec® IPA 1L Premium	1L Trigger Spray	6 x 1L	IPAWF11-LS	D06C10P
InSpec® IPA 5L Screw Cap	5 Litre Screw Cap	2 x 5L	IPAWF11-5LS	D02C00P
InSpec® IPA Pouch 15pc	15 Wipes	25 per case	IPAWFIPCH15S	W25C15P
InSpec® IPA Pouch 50pc	50 Wipes	16 per case	IPAWFIPCH50S	W16C50P
InSpec® IPA Standard Tub	200 Wipes	12 per case	IPAWF112TB200S	W12C20P

Please use the AMD Code when ordering.

AMD are the official UK distributor for Redditch Medical's range of products to the NHS, pharmacies and compounders.



+ PRODUCT INFORMATION

Use Instructions

InSpec® IPA is designed for spraying, wiping and mopping applications. Hold spray approximately 15cm to 20cm from area to be treated. 5L versions, pour into an appropriate container for mopping. Apply to surface to ensure complete coverage. For screw cap bottles use the entire contents after opening.

Technical Data

Appearance: Clear liquid free from particles. Specific Gravity (20°C): 0.872 to 0.883. Alcohol proportion: 70% +/- 2% v/v.

Storage

Store upright in original closed containers away from sunlight and extremes of temperature. Full guidance on the handling and disposal of this product is available in the Safety Data Sheet (SDS).

Safe Handling

Always wear gloves and goggles or face protection. Always read the label and SDS before use.

Material Compatibility

Application of solutions, when used as directed, will not affect materials normally encountered in the cleanroom. See compatibility information in the Technical File.

Benefits

- Low residue
- Rapid action
- Bactericidal and Fungicidal
- Contents protected using 'Bag-in-bottle' presentation with Premium range
- Contents protected using filtered trigger presentation with standard range (spray bottle)
- 1L and 5L formats manufactured with WFI quality water
- Multiple bags for cleanroom transfer
- Ideal surface and aseptic transfer disinfectants
- Manufactured to GMP
- Active Substance compliant with Article 95 of the Biocidal Products Regulation (BPR)

Technical User Information

InSpec® IPA is a sterile ready to use disinfectant. This is a 70% v/v alcohol solution in WFI quality water.

InSpec® IPA is manufactured to GMP and is filled and capped in an ISO class 5 environment.

The solution is filtered through a 0.2 micron filter and gamma irradiated to a validated process (20-50kGy for 5L products, 25-45kGy for all other sizes) to give a sterility assurance level SAL of 10⁻⁶.

Aseptic Medical Devices

Newmarket Drive, Derby DE24 8SW | +44 (0) 1332 755622
sales@asepticmedical.com | www.asepticmedical.com

Aseptic Medical Devices is a trading name of Riverside Medical Packaging Company Limited

+ InSpec® N7

Low Toxicology, pH Neutral Detergent Solution.



+ ORDERING INFORMATION

InSpec® N7 Products

Product	Pack Size	Case Size	Redditch Code	AMD Code
InSpec® N7 1L Trigger Spray	1L Trigger Spray	6 x 1L	N7WF1CC-1LS	D06C10D
InSpec® N7 5L Screw Cap	5L Screw Cap	2 x 5L	N7WF1-5LS	D02C00D
InSpec® N7 Concentrate	100ml Screw Cap	50 x 100ml	N7WF1-100MLS	D50C01D
InSpec® N7 Session Pouch 15 pc	15 Wipes	25 per case	N7WFIPCH15S	W25C15D

Please use the AMD Code when ordering.

AMD are the official UK distributor for Redditch Medical's range of products to the NHS, pharmacies and compounders.

+ PRODUCT INFORMATION

Use Instructions

InSpec® N7 is designed for cleaning hard surfaces by spraying, wiping and mopping. Hold spray approximately 15cm to 20cm from the surface area. 5L versions, pour into an appropriate container for mopping. 100ml concentrate added to 2.4L of water is required for mopping. Apply to surface to ensure complete coverage.

Technical Data

InSpec® N7 Ready to Use (RTU) is a 4% neutral detergent, pH 6.0 - 7.0. The neutral detergent has surfactant and sequestering agents designed to assist the removal of process residue and light soiling in a cleanroom environment.

Storage

Store upright in original closed containers, away from sunlight and extremes of temperature. Full guidance on the handling and disposal of this product is available in the Safety Data Sheet (SDS).

Safe Handling

Always wear gloves and goggles or face protection. Always read the label and SDS before use.

Material Compatibility

Application of solutions, when used as directed, will not affect materials normally encountered. Compatibility information in the Technical File.

Benefits

- Designed for cleaning floors, walls, ceiling and other hard surfaces for the removal of process derived residue and light soiling.
- Ideal for critical surfaces with soiling near to product manufacturing
- Very low foaming, low residue detergent with an excellent low toxicology profile
- Suitable for manual cleaning and available in convenient ready to use and concentrate formats.
- Low concentration
- All formats manufactured with WFI quality water
- Multiple bags for cleanroom transfer
- Manufactured to GMP

Technical User Information

InSpec® N7 is available in sterile RTU pre-diluted formats and as a concentrate.

InSpec® N7 is manufactured to GMP and is filled and capped in an ISO class 5 environment.

RTU solutions are diluted with WFI quality water.

The solution is filtered through a 0.2 micron filter and gamma irradiated (20 - 50 kGy for 5L products) to a validated process to give a sterility assurance level SAL of 10⁻⁶.

For screw cap bottles use the entire contents after opening.

Aseptic Medical Devices

Newmarket Drive, Derby DE24 8SW | +44 (0) 1332 755622
sales@asepticmedical.com | www.asepticmedical.com

Aseptic Medical Devices is a trading name of Riverside Medical Packaging Company Limited

+ InSpec® N10

Manual Detergent Pre-diluted. An alkaline detergent and hard surface cleaner for use in the biopharmaceutical and cleanroom industries.



+ ORDERING INFORMATION

InSpec® N10 Products

Product	Pack Size	Case Size	Redditch Code	AMD Code
InSpec® N10 1L Trigger	1L Trigger Spray	6 x 1L	N10WF1CC-1LS	D06C10N
InSpec® N10 Sterile 5L Screw Cap	5L Screw Cap	2 x 5L	N10WF1-5LS	D02C00N
InSpec® N10 100ml Concentrate	100ml Screw Cap	50 x 100ml	N10WF1-100MLS	D50C01N

Please use the AMD Code when ordering.

AMD are the official UK distributor for Redditch Medical's range of products to the NHS, pharmacies and compounders.

+ PRODUCT INFORMATION

Use Instructions

InSpec® N10 is designed for cleaning hard surfaces by spraying, wiping and mopping. For spraying hold approximately 15 to 20cm from area to be treated. For screw cap versions, pour into an appropriate container for mopping and add 100ml of concentrate per 2.4L of water. Apply to surface to ensure complete coverage

Technical Data

InSpec® N10 Ready to Use (RTU) is a 4% alkaline detergent. RTU - pH 12.1 to 13.4. Concentrate pH 13.7 to 14.4. The alkaline detergent has surfactant and sequestering agents designed to assist the removal of process residue and general soiling.

Storage

Store upright in original closed containers, away from sunlight and extremes of temperature. Full guidance on the handling and disposal of this product is available in the Safety Data Sheet (SDS).

Safe Handling

Always wear gloves and goggles or face protection. Always read the label and SDS before use.

Material Compatibility

Application of solutions, when used as directed, will not affect materials normally encountered in the cleanroom. See compatibility information in the Technical File.

Benefits

- Designed for cleaning floors, walls, ceiling and other hard surfaces for the removal of general process derived residue and soiling
- The Dycem recommended cleaner of Dycem flooring
WFI quality water
- Multiple bags for cleanroom transfer
- Manufactured to GMP
- Rapid action alkaline detergent. Suitable for manual cleaning. Available in convenient ready to use formats
- 1L and 5L formats manufactured with WFI quality water

Technical User Information

InSpec® N10 is available as a sterile and non-sterile detergent in pre-diluted and concentrated formats.

InSpec® N10 is manufactured to GMP and is filled and capped in an ISO class 5 environment.

RTU solutions are diluted with WFI quality water.

The solution is filtered through a 0.2 micron filter and gamma irradiated to a validated process (20-50kGy for 5L products, 25-45kGy for all other formats) to give a sterility assurance level SAL of 10⁻⁶.

For screw cap bottles use the entire contents after opening.

Aseptic Medical Devices

Newmarket Drive, Derby DE24 8SW | +44 (0) 1332 755622
sales@asepticmedical.com | www.asepticmedical.com

Aseptic Medical Devices is a trading name of Riverside Medical Packaging Company Limited

+ Polyester Microfibre Mop with PU Foam

High quality, efficient and effective



+ ORDERING INFORMATION

InSpec® Impregnated Mops

Product	Pack Unit	Redditch Code	AMD Code
InSpec® IPA Impregnated Mop	2 Mops x 15	IPAWFIMOP-2S	MOPR02P
InSpec® DE Impregnated Mop	2 Mops x 15	DEWFIMOP-2S	MOPR02T

InSpec® Burstable Mops

Product	Pack Unit	Redditch Code	AMD Code
InSpec® HA Burstable Mop	2 Mops x 10	HAPWMOP2S	MOPR02H
InSpec® OX Burstable Mop	2 Mops x 10	OXPWMOP2S	MOPR02X
InSpec® AN Burstable Mop	2 Mops x 10	ANWFIMOP2S	MOPR02A
InSpec® QT Burstable Mop	2 Mops x 10	QTFWIMOP2S	MOPR02Q
InSpec® QT+ Burstable Mop	2 Mops x 10	QTPLWFIMOP2S	MOPR2QT
InSpec® N10 Burstable Mop	2 Mops x 10	N10WFIMOP2S	MOPR02N
InSpec® N7 Burstable Mop	2 Mops x 10	N7WFIMOP2S	MOPR02D



Please use the AMD Code when ordering.

AMD are the official UK distributor for Redditch Medical's range of products to the NHS, pharmacies and compounders.

+ PRODUCT INFORMATION

Description

This Polyester-Microfibre Mop with felt medium to offer superb absorbency is designed for applying disinfectants to both horizontal and vertical surfaces, and is ideal for general cleaning and disinfection of ceiling, walls, and floors in the most critical environment. The microfibre material smoothly glides over floors and textured surfaces and provides superior contamination removal.

Features

- Knitted microfibre surface for good particle pick up
- Constructed with felt medium for high absorbency
- Ideal for cleaning and disinfection of Cleanrooms
- Chemical and abrasion resistant
- Light weight
- Low levels of particles
- Good gliding properties
- Lot to Lot traceable
- Sterile

Applications

- Excellent for spill control and cleaning large surfaces
- Compatible with most common detergents and disinfectants
- Suitable for use in Grade A-D cleanrooms

Technical Data

Length: 398 mm (±5 mm)

Width: 122 mm (±5 mm)

Front material: Polyester

Backing material: Nylon

Absorbency capacity: >305ml/mop (>6280ml/m²)

Particles: IEST-RPcc003.2 Helke Drumtest <3500 counts per mop >0.5µm

Weight: 900g (+/- 0.045)

Aseptic Medical Devices

Newmarket Drive, Derby DE24 8SW | +44 (0) 1332 755622
sales@asepticmedical.com | www.asepticmedical.com

Aseptic Medical Devices is a trading name of Riverside Medical Packaging Company Limited

+ Mop Pod

Innovative design, simplifies the mopping process, reduces risk and improves efficiency.

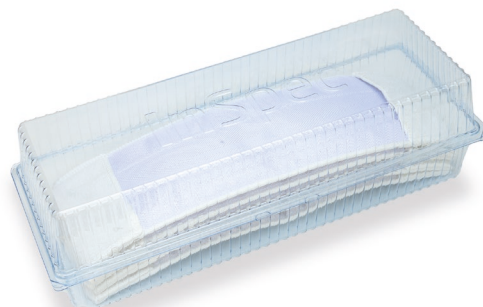
+ ORDERING INFORMATION

InSpec® Products

Product	Pack Size	Case Size	Redditch Code	AMD Code
InSpec® Pod	5 Mops/Pod	6 per Case	POD-5S	MOPPOD6
InSpec® IPA 1L Pod Dose	1L	6 per Case	IPAWFIDOSE-1LS	MDOSE6P
InSpec® DE 1L Pod Dose	1L	6 per Case	DEWFIDOSE-1LS	MDOSE6T
InSpec® HA 1L Pod Dose	1L	6 per Case	HAPWDOSE-1LS	MDOSE6H
InSpec® OX 1L Pod Dose	1L	6 per Case	OXPWDOSE-1LS	MDOSE6X
InSpec® AN 900ml Pod Dose	900ml	6 per Case	ANWFIDOSE-900MLS	MDOSE6A
InSpec® QT 1L Pod Dose	900ml	6 per Case	QTWFIDOSE-900MLS	MDOSE6Q
InSpec® QT+ 1L Pod Dose	900ml	6 per Case	QTPLWFIDOSE-900MLS	MDOSEQT
InSpec® N10 1L Pod Dose	1L	6 per Case	N10WFIDOSE-1LS	MDOSE6N
InSpec® N7 1L Pod Dose	1L	6 per Case	N7WFIDOSE-1LS	MDOSE6D

Please use the AMD Code when ordering.

AMD are the official UK distributor for Redditch Medical's range of products to the NHS, pharmacies and compounders.



+ PRODUCT INFORMATION

Use Instructions

InSpec® Mop Pods are designed for use with the complete range of **InSpec®** fluids available in dosing volumes of 1L. Simply remove the Pod from the outer packaging following standard material transfer processes. Open the Pod and pour the dosing fluid across the top of the mops in an "s shape". Leave for 2 mins to allow for wicking and even saturation of all mops. The Mops are then ready for Mopping in line with the recommended procedure, apply to the surface and ensure complete coverage.

Storage

Store upright in original closed containers away from sunlight and extremes of temperature. Full guidance on the handling and disposal of this product is available in the Safety Data Sheet (SDS).

Safe Handling

Always wear gloves and goggles or face protection. Always read the label and SDS before use.

Material Compatibility

Application of solution, when used as directed, will not affect materials normally encountered in the cleanroom. See compatibility information in the Technical File.

Mop Pod

Stacks of 5 Polyester-microfibre Mops are encased inside the Pod.

The Pod provides a simple and easy to use method of saturating the Mop to the required amount. The Mops lay flat within the Pod allowing for simple application on to the Mop head without the need for contact and reducing the risk of contamination. The lid of the Pod doubles up as the waste receptacle allowing for the simple segregation of waste and clean Mops. The use of the Mop Pod removes the need for autoclave loads of bucket systems and/or bucket liners as the single use design simply means you have everything you need with you for one session and can simply and easily dispose of your waste.

Technical User Information

InSpec® Mop Pods are sterile, polyester-microfiber mops and complement the range of sterile InSpec Dose solutions.

InSpec® Mop Pods and **InSpec®** dose solutions are manufactured in an ISO 5 (Grade A) cleanroom.

The solution is filtered through a 0.2-micron filter, and either gamma irradiated or into gamma irradiated bottles and caps, dependant on the chemistry.

InSpec® Mop Pods are supplied with Certificate of Conformity, InSpec dose solutions are provided with Certificate of Analysis, Irradiation and Sterility.

The **InSpec® Mop Pod** has a shelf life of 24 months.

Technical Data

Length: 398 mm (±5 mm)

Width: 122 mm (±5 mm)

Front material: Polyester-Microfiber

Absorbency capacity: 305ml/mop (6280ml/m²)

Particles: IEST-RPcc003.2 Helke Drumtest <3500 counts per mop >0.5µm

Weight: 900g (+/- 0.045)

Aseptic Medical Devices

Newmarket Drive, Derby DE24 8SW | +44 (0) 1332 755622
sales@asepticmedical.com | www.asepticmedical.com

Aseptic Medical Devices is a trading name of Riverside Medical Packaging Company Limited

+ Mop Pod (continued)

+ MICROBIOLOGICAL DATA

InSpec® Product	EN 1276	EN 13697	EN 1650	EN 13704
IPA	5 Log / 5mins (bacteria)	4 Log / 5 mins (bacterial) 3 Log / 15 mins (fungi)	4 Log / 15 mins (fungi)	N/A
DE	5 Log / 5mins (bacteria)	4 Log / 5 mins (bacterial) 3 Log / 15 mins (fungi)	4 Log / 15 mins (fungi)	N/A
QT	5 Log / 5mins (bacteria)	4 Log / 5 mins (bacterial) 3 Log / 15 mins (fungi)	4 Log / 15 mins (fungi)	N/A
QT+	5 Log / 5mins (bacteria)	4 Log / 5 mins (bacterial) 3 Log / 15 mins (fungi)	4 Log / 15 mins (fungi)	N/A
AN	5 Log / 5mins (bacteria)	4 Log / 5 mins (bacterial) 3 Log / 15 mins (fungi)	4 Log / 15 mins (fungi)	N/A
OX	5 Log / 5mins (bacteria)	4 Log / 5 mins (bacterial) 3 Log / 15 mins (fungi)	4 Log / 15 mins (fungi)	3 Log / 2 mins (B. subtilis)
HA	5 Log / 5mins (bacteria)	4 Log / 5 mins (bacterial) 3 Log / 15 mins (fungi)	4 Log / 15 mins (fungi)	3 Log / 1 min (B. subtilis)



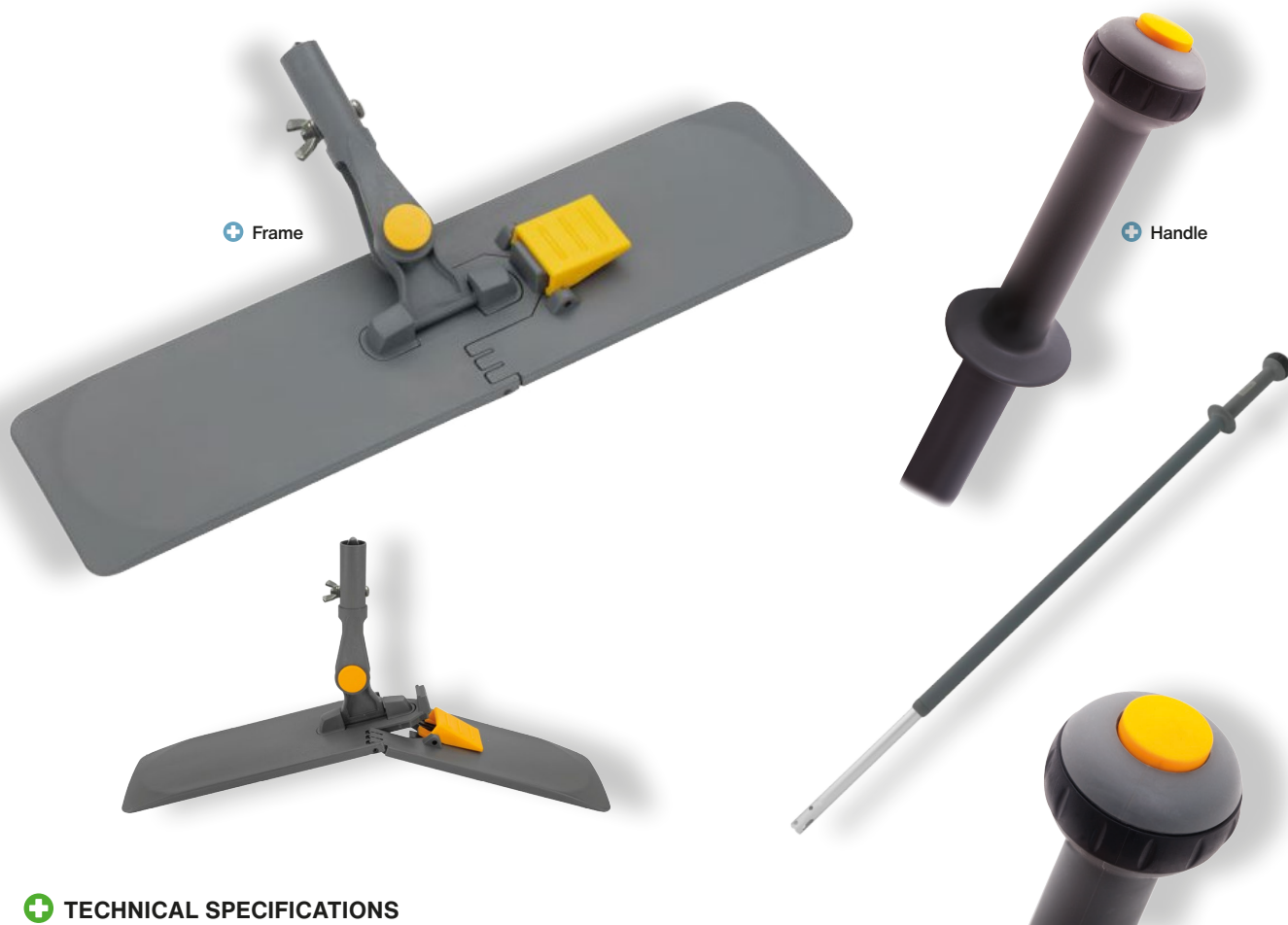
Aseptic Medical Devices

Newmarket Drive, Derby DE24 8SW | +44 (0) 1332 755622
sales@asepticmedical.com | www.asepticmedical.com

Aseptic Medical Devices is a trading name of Riverside Medical Packaging Company Limited

+ The AMD Mop Frame and Handle

AMD Hardware



+ TECHNICAL SPECIFICATIONS

Item	W	L - Min	L - Max	D	Dia	H	Weight
Frame	388mm	-	-	100mm	-	153mm	310g
Handle	-	1240mm	1770mm	-	65mm	-	590g

+ ORDERING INFORMATION

Description	AMD Part No.
Frame & Handle	M01Z01K

+ PRODUCT INFORMATION

The mop handle and frame are lightweight and ergonomically designed for ease of use, the handle length can be adjusted at the touch of a button, length adjustment between 124cm and 170cm. The durable frame is easy to open with a foot or hand and allows the user to attach the mop to the frame without touching the mop itself.

The mop frame has a full range of movement and can be locked into place, via the touch of a button.

The handle is made from a combination of aluminium and plastic, the mop frame is made from an abrasion resistant plastic and the design allows for easy cleaning.

Aseptic Medical Devices

Newmarket Drive, Derby DE24 8SW | +44 (0) 1332 755622
sales@asepticmedical.com | www.asepticmedical.com

Aseptic Medical Devices is a trading name of Riverside Medical Packaging Company Limited

InSpec®

InSpec® Product Specification

AMD Product Code	Product Description	Manufacturer Code	Chemicals	Mixture	Filtered (0.2" m)	Bag in Bottle
D08C50P	InSpec® IPA 500ml Trigger Spray	IPAWFI-500MLS	Isopropanol (propan-2-ol)	70 30 v/v 70% isopropanol mixed with 30% WFI	■	■
D06C10P	InSpec® IPA 1L Trigger Spray	IPAWFI1-1LS			■	■
MDOSE6P	InSpec® IPA 1L Dose Screw Cap	IPAWFIDOSE-1LS			■	
D02C00P	InSpec® IPA 5L Screw Cap	IPAWFI1-5LS			■	
W25C15P	InSpec® IPA 15 Pouch Wipes	IPAWFIPCH15S			■	
W16C50P	InSpec® IPA 50 Pouch Wipes	IPAWFIPCH50S			■	
W12C20P	InSpec® IPA Tub Wipes – 200 wipes / roll	IPAWFI12TB200S			■	
MOPRO2P	InSpec® IPA Mop	IPAWFIMOP-2S			■	
D08C51T	InSpec® DE 500ml Trigger Spray	DEWF11-500MLS	Ethanol, denatured by addition of isopropanol	70/30 v/v 70% ethanol mixed with 30% WFI	■	■
D06C11T	InSpec® DE 1L Trigger Spray	DEWF10-1LS			■	■
MDOSE6T	InSpec® DE 1L Dose Screw Cap	DEWFIDOSE-1LS			■	
D02C00T	InSpec® DE 5L Screw Cap	DEWF10-5LS			■	
W25C15T	InSpec® DE 15 Pouch Wipes	DEWFIPCH15S			■	
W15C51T	InSpec® DE 50 Pouch Wipes	DEWFIPCH50S			■	
W12C21T	InSpec® DE Tub Wipes - 200 wipes	DEWF112TB200S			■	
MOPRO2T	InSpec® DE Mop	DEWFIMOP-2S			■	
D06C10X	InSpec® OX 1L Trigger Spray	XPW40-1LS	Sporicidal mixture of hydrogen peroxide and peracetic acid	6% hydrogen peroxide/0.4% peracetic acid mixed with PW	■	■
MDOSE6X	InSpec® OX 1L Dose Screw Cap	XPWDOSE-1LS			■	
D06C10X	InSpec® OX 5L Screw Cap	XPW40-5LS			■	
MOPRO2X	InSpec® OX Burstable Mop	XPWMOP-2S			■	
W10C20X	InSpec® OX Burstable Wipe	XPW40BP15S			■	
D06C90Q	InSpec® QT 900MLS Trigger Spray	QTWFI30-900MLS	Quaternary ammonium compound	RTU – 0.2-0.3% w/w DDAC with surfactants and WFI, Concentrate – 6-7% w/w DDAC with surfactants and WFI	■	■
MDOSE6Q	InSpec® QT 900MLS Dose Screw Cap	QTFWIDOSE-900MLS			■	
D02C00Q	InSpec® QT 5L Screw Cap	QTWFI30-5LS			■	
D50C01Q	InSpec® QT Concentrate 100ml Screw Cap	QTCNC30-100			■	
MOPRO2Q	InSpec® QT Burstable Mop	QTFWIMOP-2S			■	
W10C20Q	InSpec® QT Burstable Wipe	QTFWFI30BP15S			■	
D06C90T	InSpec® QT+ 900MLS Trigger Spray	QTPLWFI31-900MLS	Quaternary ammonium compound with complexing agents	RTU - 0.1-0.2% w/w DDAC with surfactants and WFI, Concentrate - 5-6% w/w DDAC with surfactants and WFI	■	
MDOSEQT	InSpec® QT+ 900MLS Dose Screw Cap	QTPLWFOSE-900MLS			■	
D02C00T	InSpec® QT+ 5L Screw Cap	QTPLWFI31-5LS			■	
D50C10T	InSpec® QT+ Concentrate 102ml	QTPLCNC31-102			■	
MOPR2QT	InSpec® QT+ Burstable Mop	QTPLWFIMOP-2S			■	
D06C90A	InSpec® AN 900MLS Trigger Spray	ANWFI20-900MLS	Diamine with water	RTU - 0.2-0.3% w/w diamine with surfactants and WFI, Concentrate - 6-7% w/w diamine with surfactants and WFI	■	■
MDOSE6A	InSpec® AN 900MLS Dose Screw Cap	ANWFIDOSE-900MLS			■	
D02C00A	InSpec® AN 5L Screw Cap	ANWFI20-5LS			■	
D50C01A	InSpec® AN Concentrate 100ml	ANCNC20-100			■	
MOPRO2A	InSpec® AN Burstable Mop	ANWFIMOP-2S			■	
W10C20A	InSpec® AN Burstable Wipe	ANWFI20BP15S			■	
D06C10H	InSpec® HA 1L Trigger Spray	HAPW50-1LS	Sporicidal mixture made of hypochlorous acid	Active chlorine released from Hypochlorous Acid – 500ppm	■	
MDOSE6H	InSpec® HA 1L Dose Screw Cap	HAWFIDOSE-1LS			■	
D02C00H	InSpec® HA 5L Screw Cap	HAPW50-5LS			■	
MOPRO2H	InSpec® HA Burstable Mop	HAPWMOP-2S			■	
W10C20H	InSpec® HA Burstable Wipe	HAPW50BP15S			■	

Aseptic Medical Devices

Newmarket Drive, Derby DE24 8SW | +44 (0) 1332 755622
sales@asepticmedical.com | www.asepticmedical.com

Aseptic Medical Devices is a trading name of Riverside Medical Packaging Company Limited



Screw Cap	Wipe/Mop Head	Sterile	Terminally Sterilised	Aseptically Filled	Shelf Life from Date of Manufacture	Shelf Life from Date of Opening
		■	■		2 years	6 months
		■	■		2 years	6 months
■		■	■		2 years	4 hours
■		■	■		2 years	4 hours
	■	■	■		2 years	4 hours
	■	■	■		2 years	4 hours
	■	■	■		2 years	4 hours
	■	■	■		2 years	4 hours
		■	■		2 years	6 months
		■	■		2 years	6 months
■		■	■		2 years	4 hours
■		■	■		2 years	4 hours
	■	■	■		2 years	4 hours
	■	■	■		2 years	4 hours
	■	■	■		2 years	4 hours
		■	■	■	2 years	6 months
■		■	■	■	2 years	4 hours
■		■	■	■	2 years	4 hours
	■	■	■	■	2 years	4 hours
	■	■	■	■	2 years	4 hours
		■	■	■	2 years	6 months
■		■	■	■	2 years	4 hours
■		■	■	■	2 years	4 hours
■		■	■	■	2 years	4 hours
	■	■	■	■	2 years	4 hours
	■	■	■	■	2 years	4 hours
■		■	■	■	2 years	6 months
■		■	■	■	2 years	4 hours
■		■	■	■	2 years	4 hours
■		■	■	■	2 years	4 hours
	■	■	■	■	2 years	4 hours
	■	■	■	■	2 years	4 hours
■		■	■	■	1 year	6 months
■		■	■	■	1 year	4 hours
■		■	■	■	1 year	4 hours
	■	■	■	■	1 year	4 hours
	■	■	■	■	1 year	4 hours

Aseptic Medical Devices

Newmarket Drive, Derby DE24 8SW | +44 (0) 1332 755622
 sales@asepticmedical.com | www.asepticmedical.com

Aseptic Medical Devices is a trading name of Riverside Medical Packaging Company Limited





Aseptic Medical Devices

Newmarket Drive, Derby DE24 8SW | +44 (0) 1332 755622
sales@asepticmedical.com | www.asepticmedical.com

Aseptic Medical Devices is a trading name of Riverside Medical Packaging Company Limited