

+ Burstable Pouch Sterile Session Wipes

A complete range of sterile sporicidal, biocidal and detergent wipes in a session wipe. Pouch compartments maintain wipe and product efficacy for full shelf life.



+ ORDERING INFORMATION

InSpec™ Burstable Pouches

Product	Pack Size	Case Size	Redditch Code	AMD Code
InSpec™ HA Burstable Pouch	15 wipes/pouch	20 per case	HAPW50BP15S	W10C20H
InSpec™ OX Burstable Pouch	15 wipes/pouch	20 per case	OPW40BP15S	W10C20X
InSpec™ AN Burstable Pouch	15 wipes/pouch	20 per case	ANWF120BP15S	W10C20A
InSpec™ QT Burstable Pouch	15 wipes/pouch	20 per case	QTWF130BP15S	W10C20Q
InSpec™ QT+ Burstable Pouch	15 wipes/pouch	20 per case	QTPLWF131BP15S	W10C20T

Please use the AMD Code when ordering.

AMD are the official UK distributor for Redditch Medical's range to pharmacies and compounders.

+ PRODUCT INFORMATION

Use Instructions

Remove the pouch from the outer dust bag. With the inner bag intact, roll the foil pouch/liquid compartment and apply downward pressure to burst the liquid through the frangible seal. Leave for one minute to saturate the wipes. Remove the foil pouch from the outer bag. Tear open the end of the bag and peel open the foil pouch to gain access to the wipes. Use a recommended wiping technique to clean and disinfect the surface.

Technical Wipe Data

Lint Grade 1. 68gsm Polyester (46%) / Cellulose (54%) material 230mm x 230mm (9" x 9"). Thickness 0.32mm.

Storage

Store in original packaging away from sunlight and extremes of temperature. Full information on the storage and handling is available on the Safety Datasheets (SDS).

Safe Handling

Always wear gloves and goggles or face protection. Always read the label and SDS before use.

Material Compatibility

Application of solutions, when used as directed, will not affect materials normally encountered in the cleanroom. See compatibility information in the Technical File.

Benefits

- HA (Hypochlorous Acid) suitable for the aseptic transfer process
- Fully validated formulations
- <60 seconds activation time
- In-use shelf life of 2 hours
- Session wipe format minimises waste
- Any combination of AN, QT, OX and HA are ideal rotational partners
- Manufactured to GMP in an ISO 6 cleanroom. The product is filled and capped in an ISO class 5 environment
- Sterile wipes until the point of use
- Multiple bags for cleanroom transfer
- Manufactured to GMP
- The solution is filtered through a 0.2 micron filter and aseptically filled into pre-gamma irradiated packaging (25-45kGy) and tested to give a sterility assurance level SAL of 10⁻⁶

Specification

The burstable wipes are available in a choice of five presentations:

OX Sporicidal preparation of Hydrogen Peroxide 6%/Peracetic Acid 0.4% v/v. Rapid action 2 minute kill time. 2 year shelf life.

HA Sporicidal preparation of Hypochlorous Acid. A safe handling, low odour, low residue. Rapid action 1 minute kill time. 1 year shelf life.

QT Biocidal quaternary ammonium compound disinfectant cleaner. A rapid action, non-oxidising biocide. 2 year shelf life.

QT+ Biocidal quaternary ammonium compound disinfectant cleaner. Exceptional Quat disinfectant with proven efficacy against a wide range of Bacteria, Yeast and Fungi. 2 year shelf life.

AN Biocidal diamine disinfectant. A broad spectrum, rapid action, low residue, Quat free. 2 year shelf life.

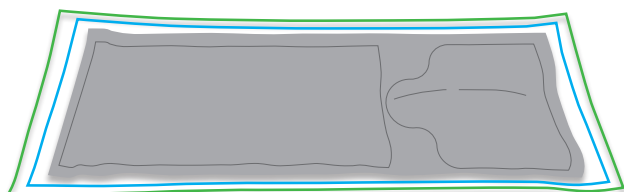
InSpec™ wipes are manufactured to GMP in an ISO 6 cleanroom. The products are filled and sealed in an ISO class 5 environment.

Redditch Medical

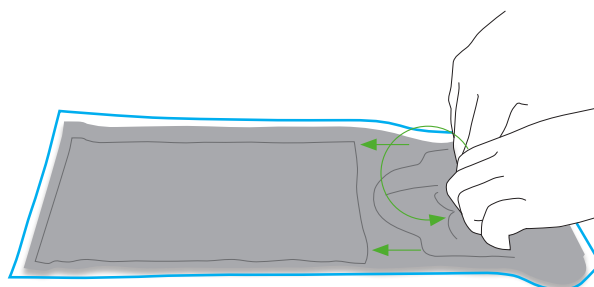
Discovery 2, NETPark, 2 William Armstrong Way, Sedgefield, County Durham, TS21 3FD
UK Tel: +44 (0) 1332 755622 | International Tel: +44 (0) 1527 830942
sales@redditchmedical.com | www.redditchmedical.com

+ Sterile Biocidal Session Wipes

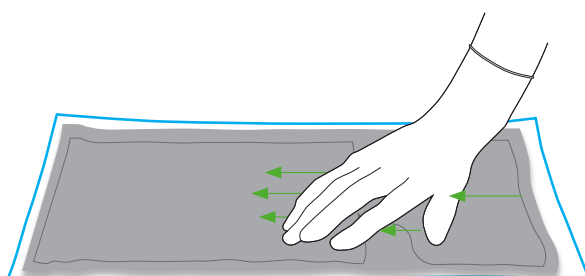
Instructions for Use.



- 1** Ensure the pouch is free from defects and is placed on a hard flat surface. Remove all but one outer bag. NB – sterile products start with two outer bags, non-sterile versions only have a single outer bag.



- 2** With a single outer bag remaining, roll the pouch from the liquid end and apply pressure to force the liquid across the frangible barrier to wet the wipes/mop.

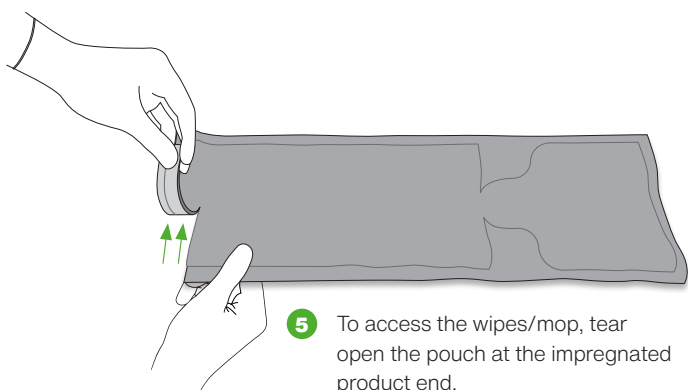


- 3** Ensure liquid is fully transferred to the wipe/mop section.

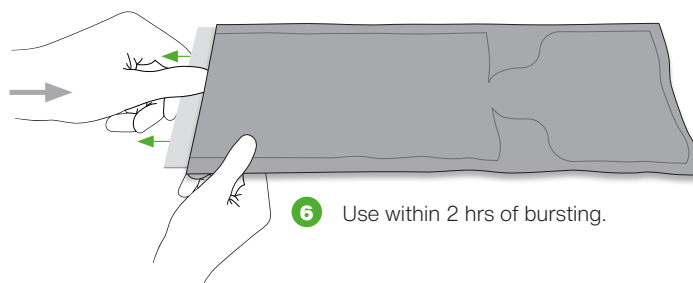


1 MINUTE

- 4** Wait for 1 minute, then remove the clear outer bag ensuring there is no damage or leak present.



- 5** To access the wipes/mop, tear open the pouch at the impregnated product end.



- 6** Use within 2 hrs of bursting.

Redditch Medical

Discovery 2, NETPark, 2 William Armstrong Way, Sedgefield, County Durham, TS21 3FD
UK Tel: +44 (0) 1332 755622 | International Tel: +44 (0) 1527 830942
sales@redditchmedical.com | www.redditchmedical.com